

KONICA MINOLTA

AccurioPrint
C4065P

DURABLE MEETS SMART

RETHINK PRINT PRODUCTION



Giving Shape to Ideas

BE CREATIVE

RETHINK GRAPHIC COMMUNICATION

Equipped with booklet and staple finishing, 2-sided banner printing, high productivity up to 66 ppm, excellent image quality and so much more, the AccurioPrint C4065P from Konica Minolta really offers everything in a compact printing environment. This revolutionary color production press has all the features to your business needs to easily develop new revenue streams and expand into new markets.

Exceptional quality, every print

The entry-level machine does not make a compromise when it comes to print quality. State-of the art image processing technologies such as S.E.A.D. X ensure a reliable and consistent output.

Grow your business

The AccurioPrint C4065P expands your business with new capabilities. Our system offers the highest media variety in the market, from thin to thick paper, embossed paper, envelopes and many more. Supported by our new optional media sensor to guarantee worry-free operation.

A compact engine does it all

The AccurioPrint C4065P is a clever press to expand your business as you wish. You can print flat sheets, duplex long sheets of up to 864 mm, or directly finish prints inline.

Boost efficiency

Operators of any AccurioPress system can count on simple setup, an ultra-reliable paper path, exceptional productivity and outstanding automated image stability. Our R&D Team has given highest priority to fulfilling today's high demands in the printing industry. What's more, the AccurioPress system seamlessly integrates into various software applications from our portfolio that will make your business more economic.





INNOVATE PRINT RETHINK TECHNOLOGY

Simitri® HD E toner

Simitri® HD E ensures consistently excellent image output quality on par with offset quality. The images produced have razor-sharp edges and lines, outstandingly solid colours, and brilliant half-tone and skin-tone quality. The secret behind the quality of Simitri® HD E toner is that it was engineered to easily follow the roughness of the paper surface to achieve an optimised and natural lustre for each type of paper - from glossy and matt coated paper to non-coated paper.



S.E.A.D. X Image Processing

Konica Minolta’s own advanced colour processing technology of the fifth generation is called S.E.A.D. X, which stands for “Screen-Enhancing Active Digital Process”, and combines an array of technical innovations to guarantee truly exceptional colour reproduction at top speed.



Media Detection Sensor

The optional media sensor IM-101 automatically detects the type, weight, thickness and surface of each substrate, and proposes the appropriate

paper settings from the catalogue, which makes wrong paper settings a thing of the past avoiding misprints and waste.

STATE-OF-THE-ART PRINT SERVER

RETHINK YOUR USER EXPERIENCE

THE IC-419 INTERNAL FIERY IMAGE CONTROLLER

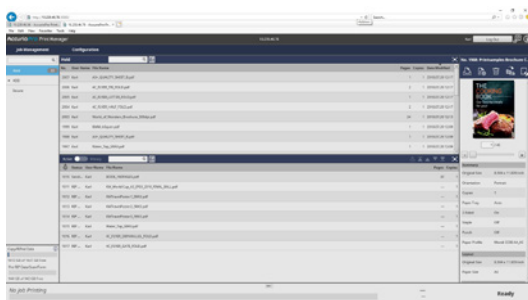
As the embedded Fiery® controller alternative, the IC-419 offers a combination of affordability, versatile colour management and PCL support plus a wide range of security features. It helps improve the ease of use of AccurioPress systems, and simplifies workflows so that our digital colour presses deliver truly professional print results, making any configuration an ideal business solution for your company's printing facilities.

THE IC-607 KONICA MINOLTA OWN CONTROLLER

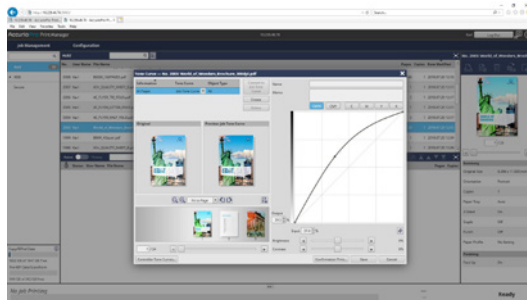
The Konica Minolta IC-607 print controller brings powerful workflow benefits – including 2,400 dpi printing at full rated engine speed, high-speed RIP processing, enhanced accuracy in colour reproduction, colour management functions and full compatibility with print engine on-board job control and editing functions.

ACCURIOPRO PRINT MANAGER

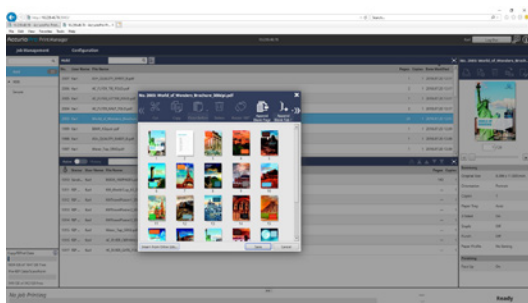
is a standard tool that helps you to get the most out of your print production with fast and easy job management. It offers various functions to improve the overall workflow such as job monitoring, editing or hot folder functions.



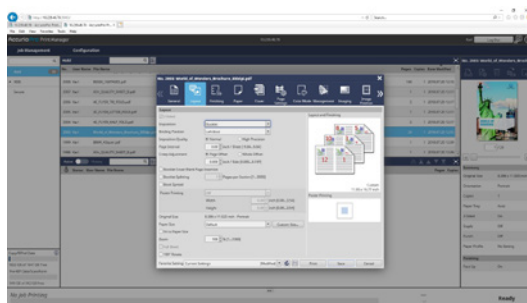
QUEUE MANAGEMENT



TONE CURVE UTILITY



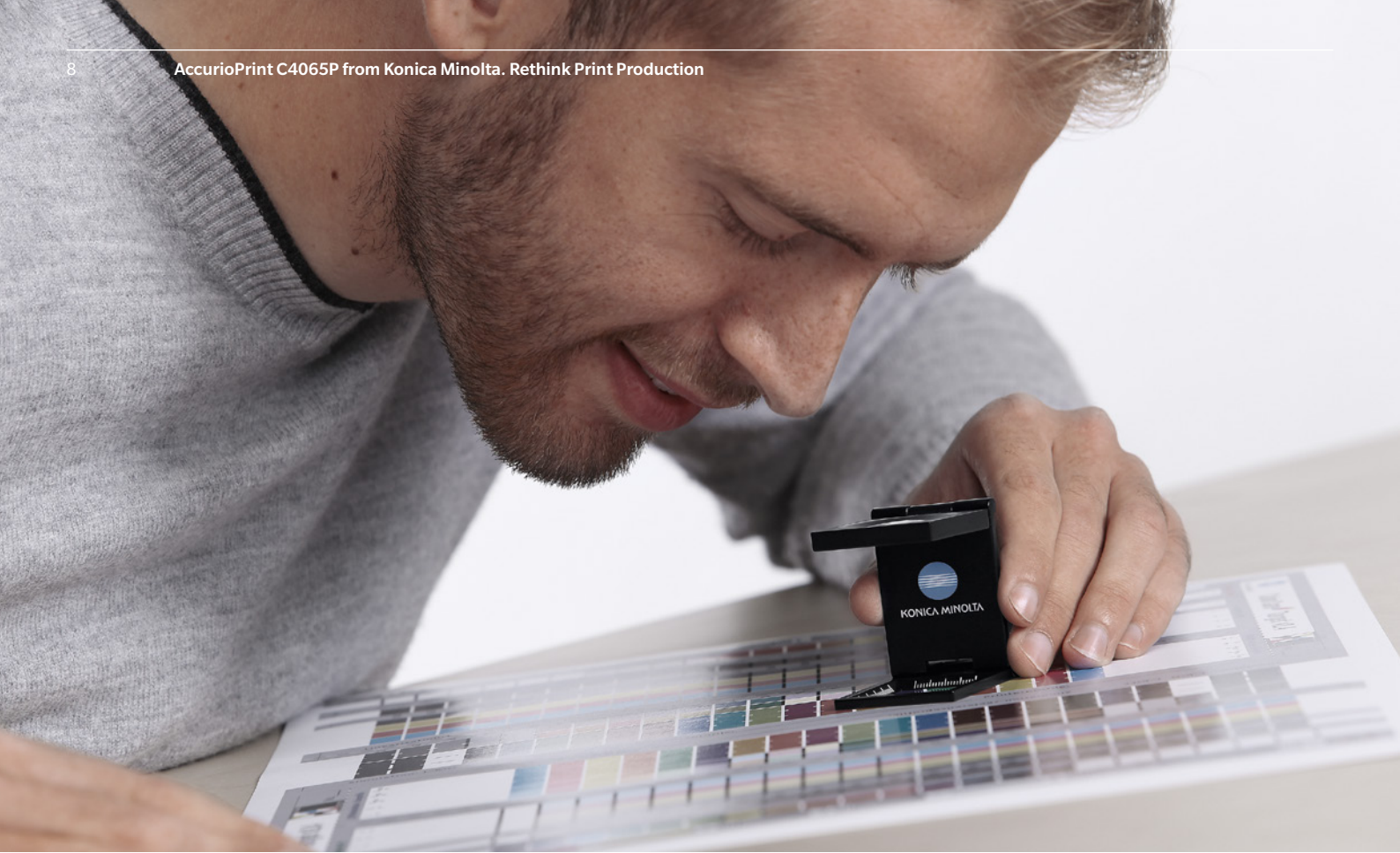
PAGE EDITING



JOB PROPERTIES







STREAMLINE YOUR PRODUCTION

RETHINK YOUR WORKFLOW

Evolving from our expertise in precision technologies and more than 80 years of experience in the printing and imaging industries, AccurioPro reflects our commitment to developing market-shaping technology with functionality that enables your business to grow. AccurioPro, Konica Minolta's suite of digital solutions for professional printing, is one of the industry's most versatile and powerful tools to optimise print production operations and workflows.

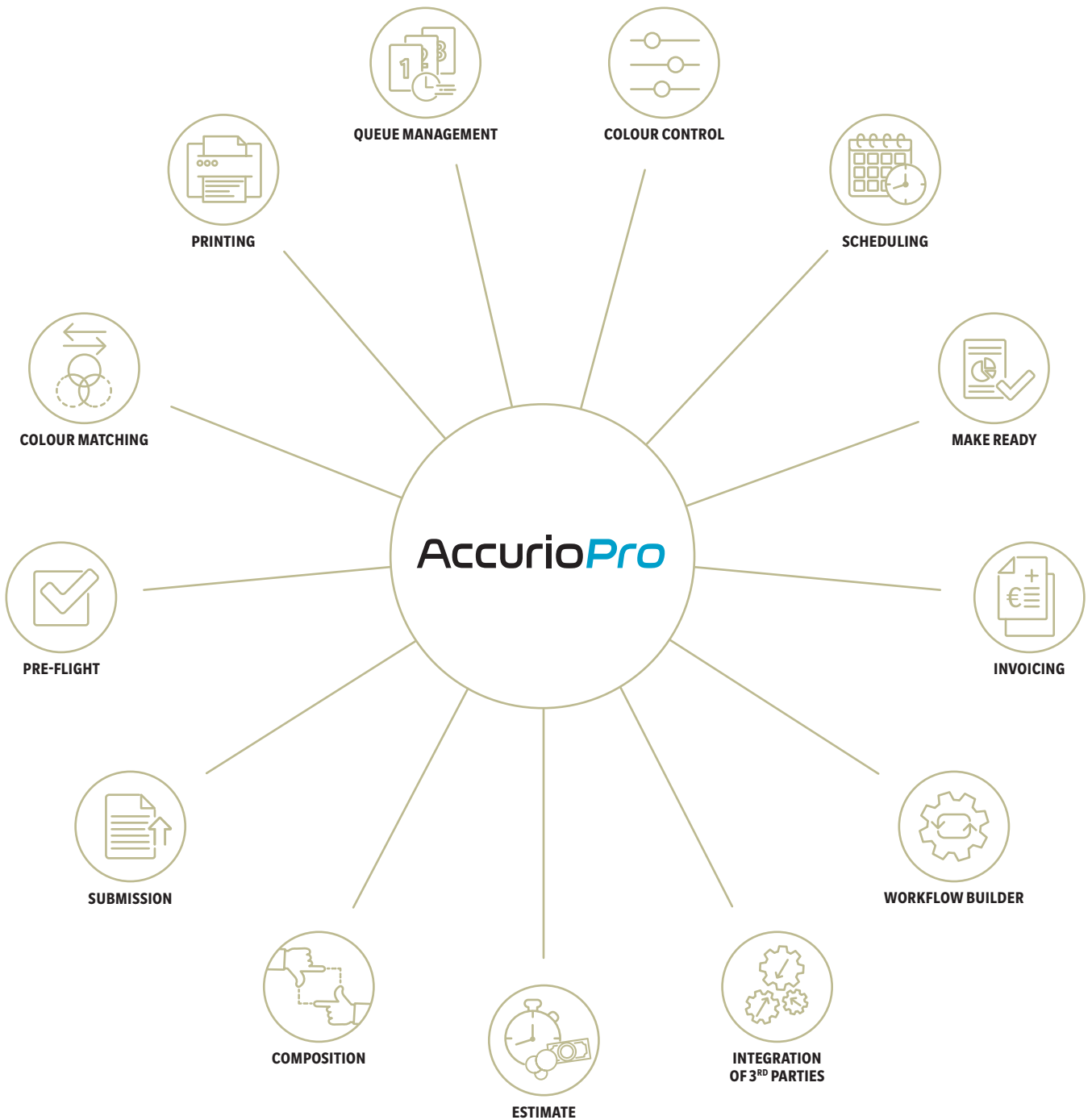
For all printing companies looking to integrate their printing as well as businesses that use digital printing to produce their own in-house publications and promotional materials, AccurioPro boosts speed and

efficiency, expands capabilities and services, and reduces the need for operational manpower – all of which will help improve your profitability!

The comprehensive suite of features that AccurioPro offers includes centralised management, software for automated workflow processing, colour management, seamless integration of different printing technologies and full connectivity of all Konica Minolta printing systems used from input to output.

AccurioPro POSSIBILITIES

RETHINK YOUR WORKFLOW







YOUR ADVANTAGES WITH THE AccurioPrint C4065P

RETHINK PRODUCTION PRINTING

READY-MADE PRINT PRODUCTS

- Stacking of up to 4,200 sheets
- Two-point and corner Stapling of up to 100 sheets with automatic staple cut mechanism
- Booklet Making up to 80 pages (20 sheets)
- 2- and 4 -hole punching
- Tri-folding up to 3 sheets

DURABLE PERFORMANCE

AccurioPrint C4065P

- Up to 66 A4 color pages per minute
- Up to 37 A3 color pages per minute



HIGHEST RELIABILITY

- Long-life platform, long-lasting parts and consumables
- Accurate front to back registration
- Fusing-rolling mechanism

PERFECT IMAGE QUALITY

- S.E.A.D. X technology and 3,600 x 2,400 dpi x 8 bit resolution
- Simitri HDe toner technology
- Image density control technology

HIGH-END PRINT CONTROL

- Flexible choice of controller technology: EFI® or proprietary Konica Minolta controller
- Integration into hybrid workflows

EASE OF USE

- Simple paper catalogue settings
- Operator Replaceable Unit Management
- Open API/IWS support

SOPHISTICATED MEDIA HANDLING

- Air suction or air-assisted paper feeding technology as an option
- Long sheet printing of up to 1,300 mm (simplex), 864 mm (duplex)



















COMPREHENSIVE MEDIA PROCESSING

- Up to 360 g/m² paper weight in simplex and duplex
- Optional media sensor estimates paper weight and type
- Envelope print function as standard
- Support for embossed paper



FINISHING & FUNCTIONS

RETHINK FLEXIBILITY

		 Letter fold	 2/4 hole Punching	 Two-point stapling	 Corner stapling	 Stacking	 Booklet	 Post Insertion
Open stacker OT-512								
Staple finisher FS-532m								
Multi purpose stacker Plockmatic MPS-130								

 standard  optional









10 GOOD REASONS FOR AccurioPrint C4065P



1. SIMPLY EFFICIENT

with up to 66 ppm color and 81 ppm monochrome pages per minute and 100 % duplex productivity.



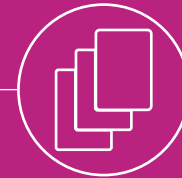
2. PERFECT IMAGE QUALITY

with Konica Minolta's very own Imaging Technology and Toner development.



5. ENHANCE YOUR RANGE OF PRINT OFFERINGS

and fulfill today's demands for versatile and creative print products.



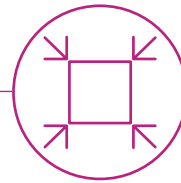
6. OUTSTANDING PAPER COMPATIBILITY

Media up to 360 g/m². Excellent versatility with class leading banner printing, envelop printing and textured paper printing capabilities.



3. SEAMLESS INTEGRATION

into Konica Minolta's application portfolio.



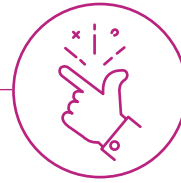
4. SMART AND COMPACT DESIGN

with robust printing features.



7. HIGH RELIABILITY

with long-lasting parts and robust construction.



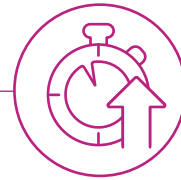
8. LOW LEARNING CURVES

Precise colour matching, even for novice operators, avoids or at least minimises learning curves.



9. BENEFIT FROM GREAT BUILT-IN TECHNOLOGIES

e.g. the latest screening and registration technologies.



10. HIGH OUTPUT EVEN WITHOUT SKILLS

by improved technologies.

TAKE THE LEAD AND SHOW RESPONSIBILITY

RETHINK TOMORROWS BUSINESS

Commercial printers

The AccurioPrint C4065P supports you in growing your business and getting the most out of your investment. Its high speed, high productivity and high uptime help you achieve shortest turnaround times, while the great media flexibility with stocks of up to 360 g/m², long sheets of up to 1,300 mm, envelopes and structured media will further enhance the variety of our print offerings.

CRDs

The AccurioPrint C4065P provides the highest degree of automation and produces quality on the highest level. With its professional inline finishing, you can create ready-made products at the push of a button. The versatile media flexibility and high productivity make the series a solid and lucrative investment for the future.

Sustainability

Konica Minolta promotes sustainable development and integrates environmental and social perspectives into its business strategies. In building your business, you can rely on Konica Minolta products to underpin your green strategy.

Committed to help prevent global warming, Konica Minolta strives to reduce CO₂ emissions during product manufacture, product distribution, at the sales stage, and during product use – with even stricter targets than demanded by the Kyoto Protocol.

Enabling carbon neutrality, Konica Minolta proposes to its customers the offset of unavoidable CO₂ emissions for production printing. Together with the experts from Climate Partner, we offer a new and profound concept for professional production devices.





CONTROLLER AND OPTIONS

RETHINK THE NEEDS

FIERY IMAGE CONTROLLER IC-419

Architecture	Internal
OS	Windows 10
CPU	Intel® Pentium® Processor G4400
Clock speed	3.3 GHz
RAM std	8 GB
HDD	500 GB
Page-description language	Adobe PostScript 3; native PDF print support V2.0; 183 Adobe PS fonts; APPE v5; PCL5/PCL6; Optimized PDF & PS; Fiery FreeForm Plus; Fiery FreeForm
Applicable OS	Windows 8.1/10; Windows Server 2012/2016/2019; Mac OS X 10.11-15

KONICA MINOLTA IMAGE CONTROLLER IC-607

Architecture	Internal
OS	Linux
CPU	Intel® Pentium® Processor G4400
Clock speed	3.3 GHz
RAM std	16 GB
HDD	2 TB (2x 1TB)
Page-description language	Adobe PostScript 3; TIFF v6; PDF 1.7, X-1a, X-3, X-4, VT2; PPML 2.2; PCL 5c, XL; PCL XL; JDF/JMF
Applicable OS	Windows 8.1/10; Windows Server 2012/R2/2016/2019; Mac OS X 10.11-15

OPTIONS

KM Image Controller	IC-607
EFI internal Controller	IC-419
Paper Feeding Unit	PF-602m
Dehumidifier heater	HT-504
Paper feeding unit	PF-707m
Dehumidifier heater	HT-506
Large capacity feeding unit	LU-202m
Dehumidifier heater for LU	HT-503
Envelop printing guide for LU	MK-746
Large capacity feeding unit (banner)	LU-202XLm
Working Table	WT-511
Dehumidifier Heater	HT-511
Multi bypass feeding	MB-508
Banner Paper Feeder kit	MK-760
Multi bypass tray	MB-509
Intelligent Media Sensor	IM-101
Output Tray	OT-511
Envelop Fusing Unit	EF-107
Long Sheet Kit (Output)	MK-761
Stapling Unit	FS-532m
Saddle Stitcher Kit	SD-510
Punch Kit	PK-525
Post Inserter Kit	PI-502
Press & Trim Kit	PT-220
Corner Forming Kit	SF-204
Output Tray Unit	OT-512





KONICA MINOLTA

TECHNICAL SPECIFICATIONS

RETHINK PRODUCTION PRINTING

SYSTEM SPECIFICATIONS

Resolution	3,600 x 2,400 dpi x 8 bit
Paper weight	62 – 360 g/m ²
Paper sizes	330.2 x 487.7 mm 330.2 x 864 mm (max. duplex) 330.2 x 1300 mm (max. simplex)
Paper input	Max.: 8,880 sheets
Dimension (WxDxH)	800 x 903 x 1,076 mm
Unit weight	316 kg

PRODUCTIVITY

AccurioPrint C4065P

A4 – max. per minute	66 ppm
A3 – max. per minute	37 ppm

- All specifications refer to A4-size paper of 80 g/m² quality.
- The support and availability of the listed specifications and functionalities varies depending on operating systems, applications and network protocols as well as network and system configurations.
- The stated life expectancy of each consumable is based on specific operating conditions such as page coverage for a particular page size (5% coverage of A4). The actual life of each consumable will vary depending on use and other printing variables including page coverage, page size, media type, continuous or intermittent printing, ambient temperature and humidity.
- Some of the product illustrations contain optional accessories.
- Specifications and accessories are based on the information available at the time of printing and are subject to change without notice.
- Konica Minolta does not warrant that any prices or specifications mentioned will be error-free.
- All brand and product names may be registered trademarks or trademarks of their respective holders and are hereby acknowledged.